

# Thruster Osteoarthritis Knee Brace Reference Information

## Diagnosis

A complete diagnosis of the patient's knee condition including:

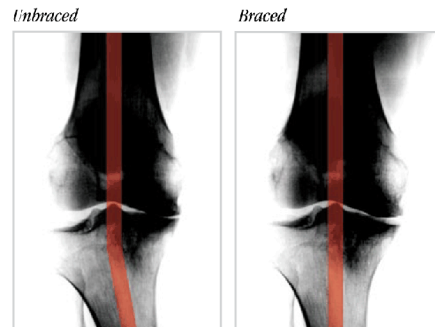
- Medial or lateral joint line pain
- Valgus or varus alignment condition of the leg.
- Relevant/recent surgery
- X-ray confirmation of unicompartamental joint line narrowing.



Contact: Rob Lukowski for answers on how and where the Thruster Osteoarthritic Knee Brace can be applied.

(717) 278-3333

**DX** Medial unicompartamental Osteoarthritis:



- Pain in the medial joint line can be associated with a bowlegged stance.

**RX** Should read: Unload the medial compartment of the right or left knee with a Thruster Osteoarthritic Knee Brace.

-----  
**DX** Lateral unicompartamental Osteoarthritis:

- Pain in the lateral joint line can be associated with a knock-kneed stance.

**RX** Should read: Unload the lateral compartment of the right or left knee with a Thruster Osteoarthritic Knee Brace.